

# PANTALÓN

T. 38 - - - - -

T. 40 — — — — —

T. 42 - - - - -

---

## TELA RECOMENDADA:

Crepe Armani, Sedita Gucci

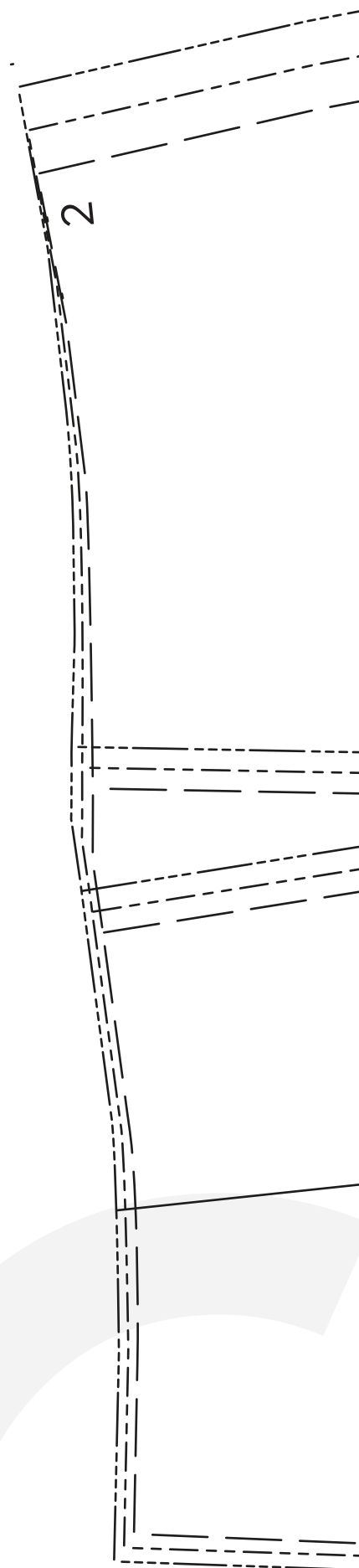
---

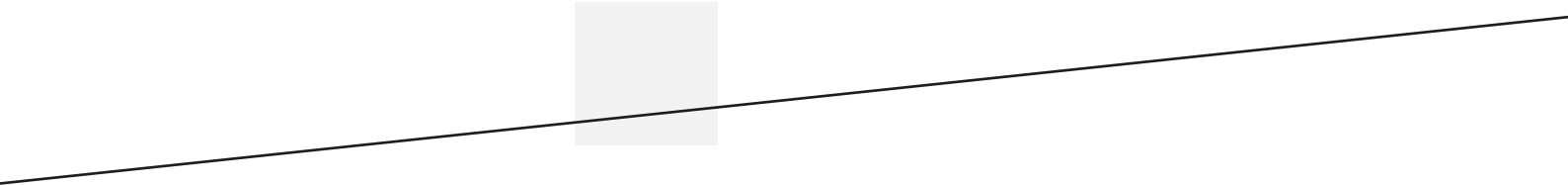
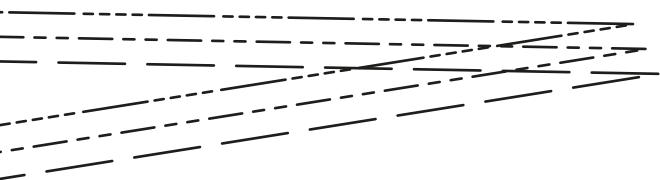
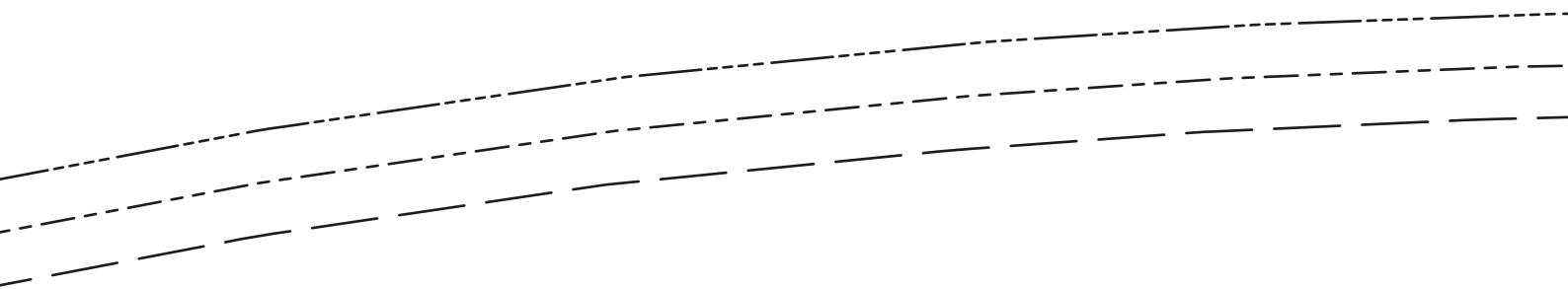
**Cantidad aproximada de tela:** 2 mts

---

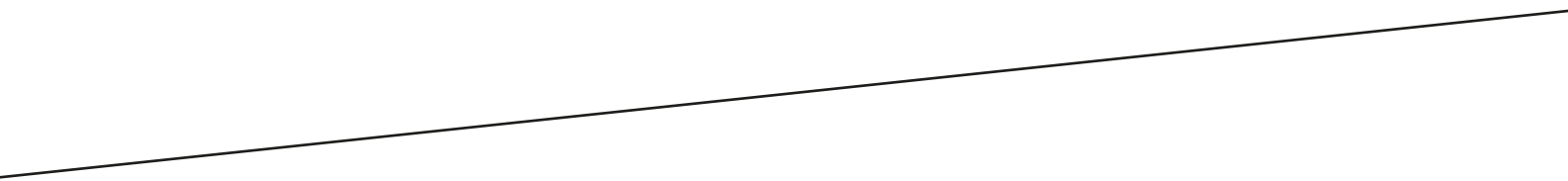
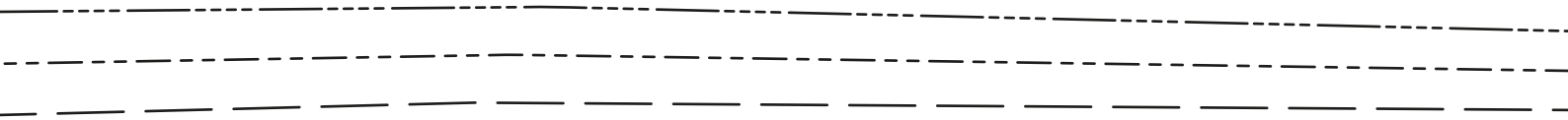
**REFERENCIAS:** Corte

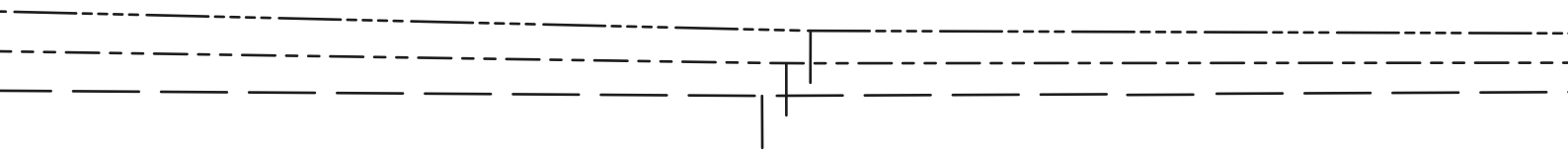
- ➊ Parte delantera pantalón
- ➋ Parte trasera pantalón
- ➌ Bolsillo
- ➍ Tapa de bolsillo



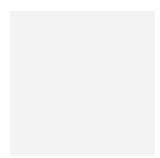


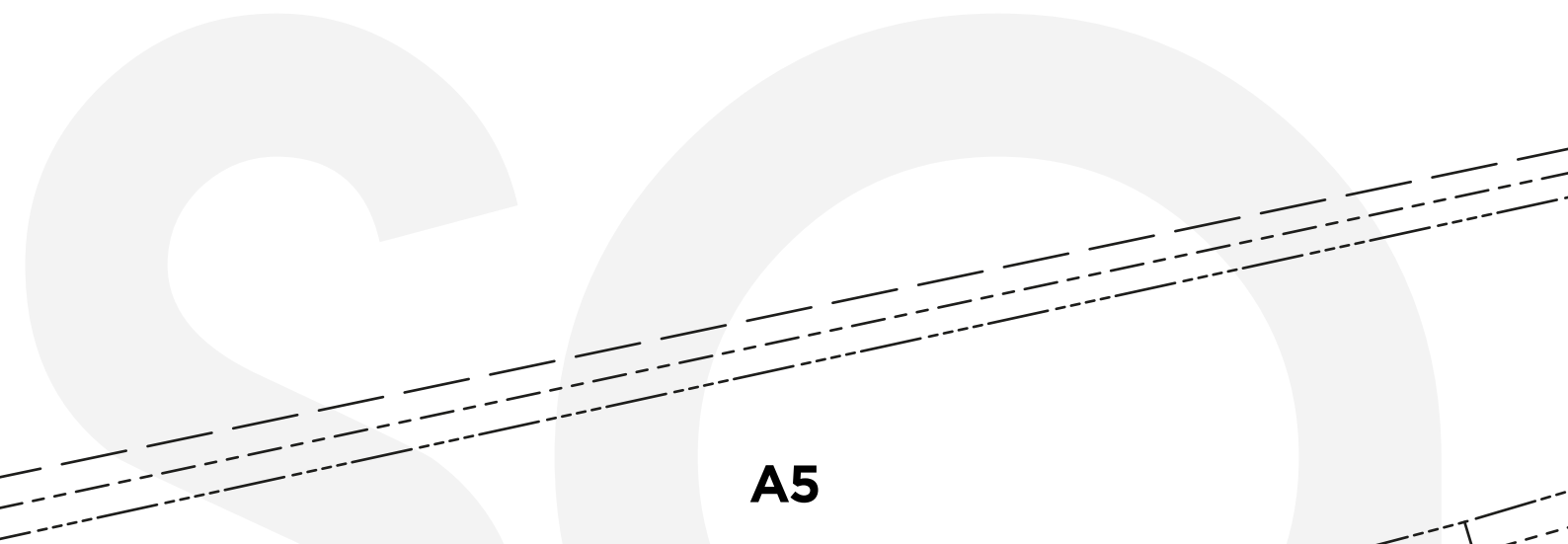
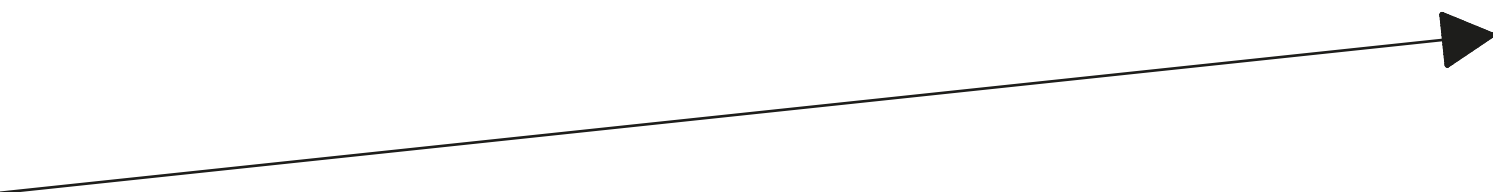
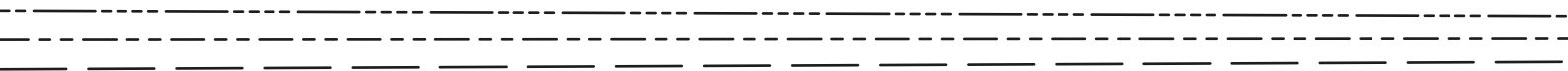
Costura central trasera

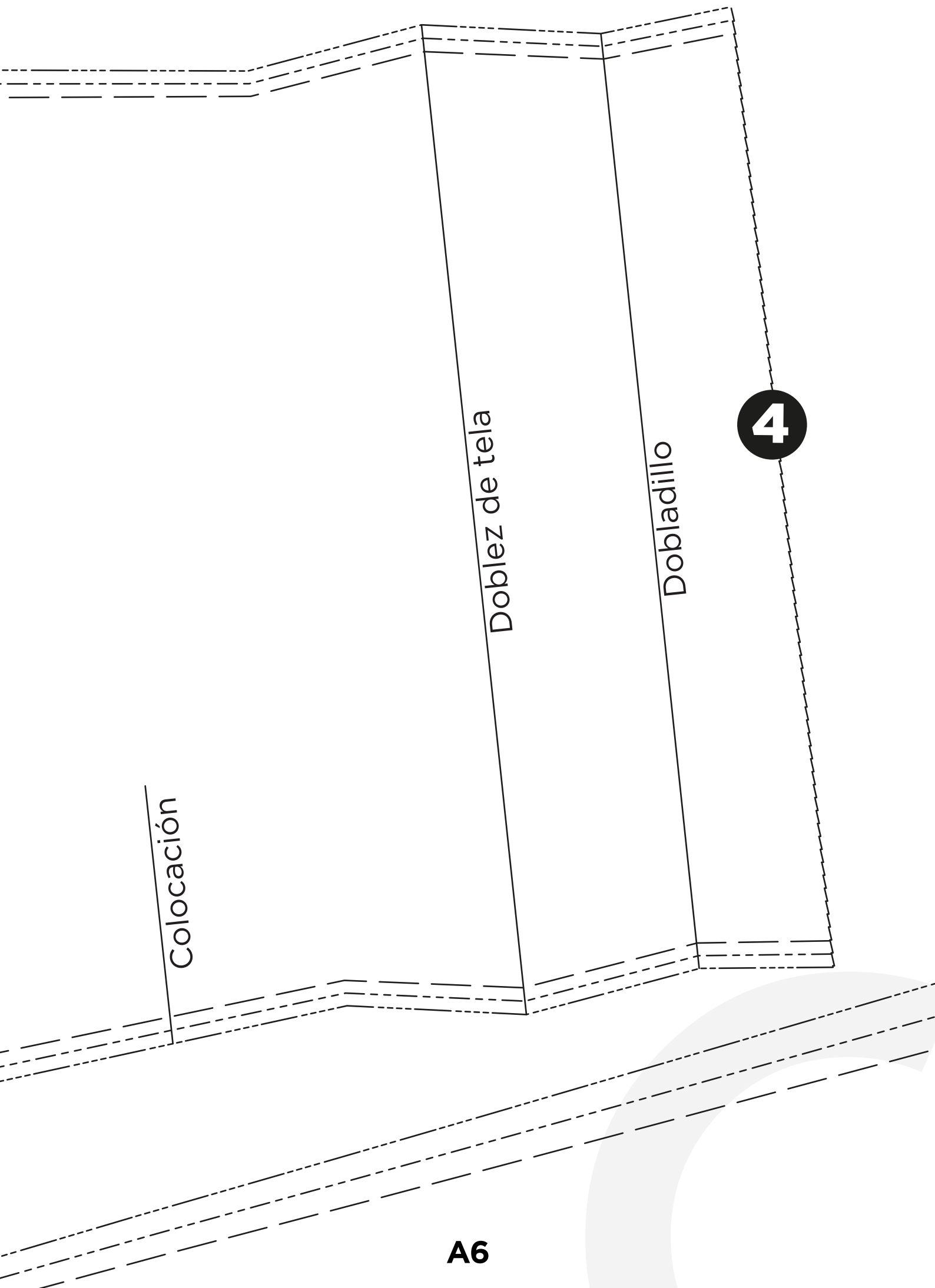




Direction del hilo







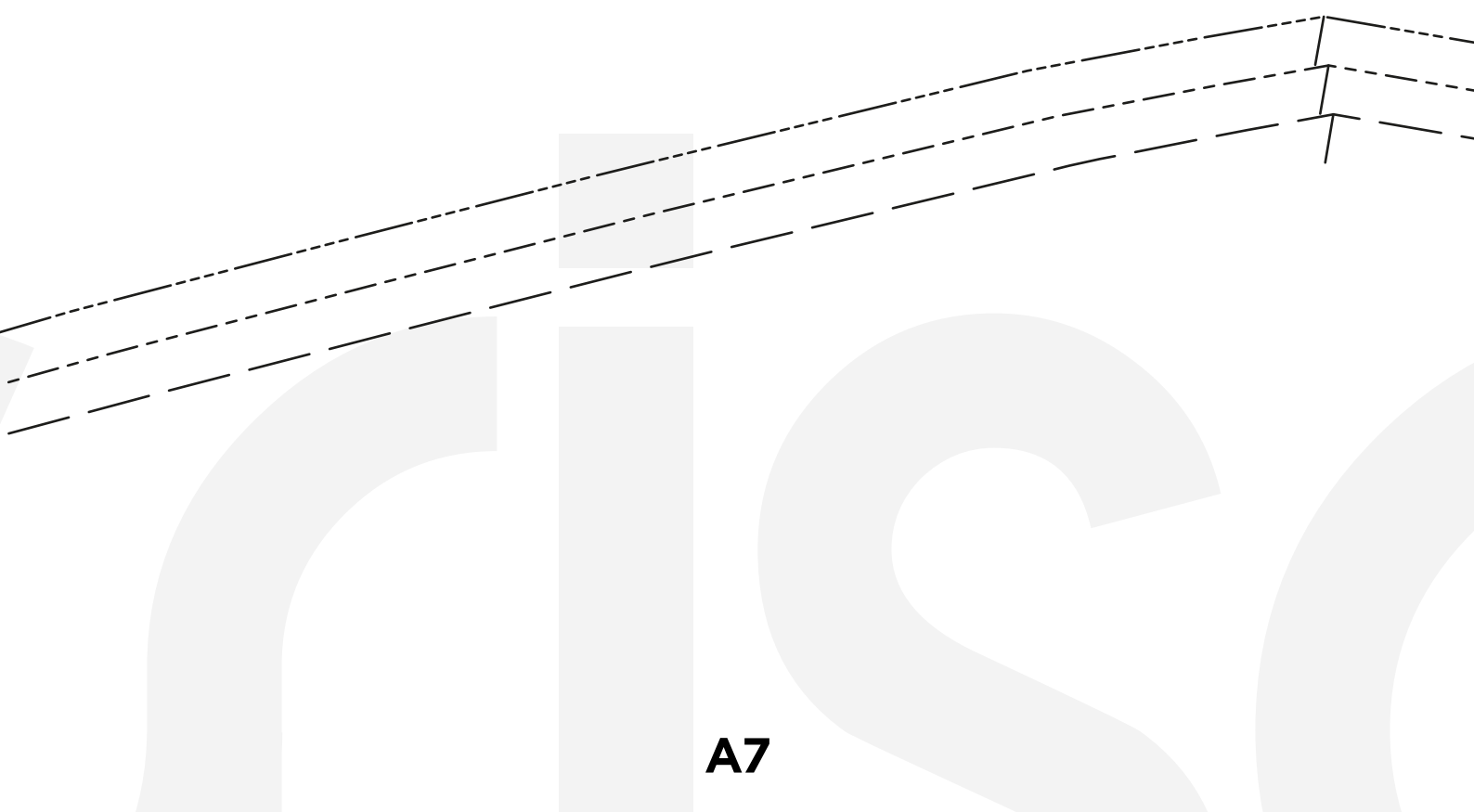
Colocación

Doble de tela

Doblado

4

A6

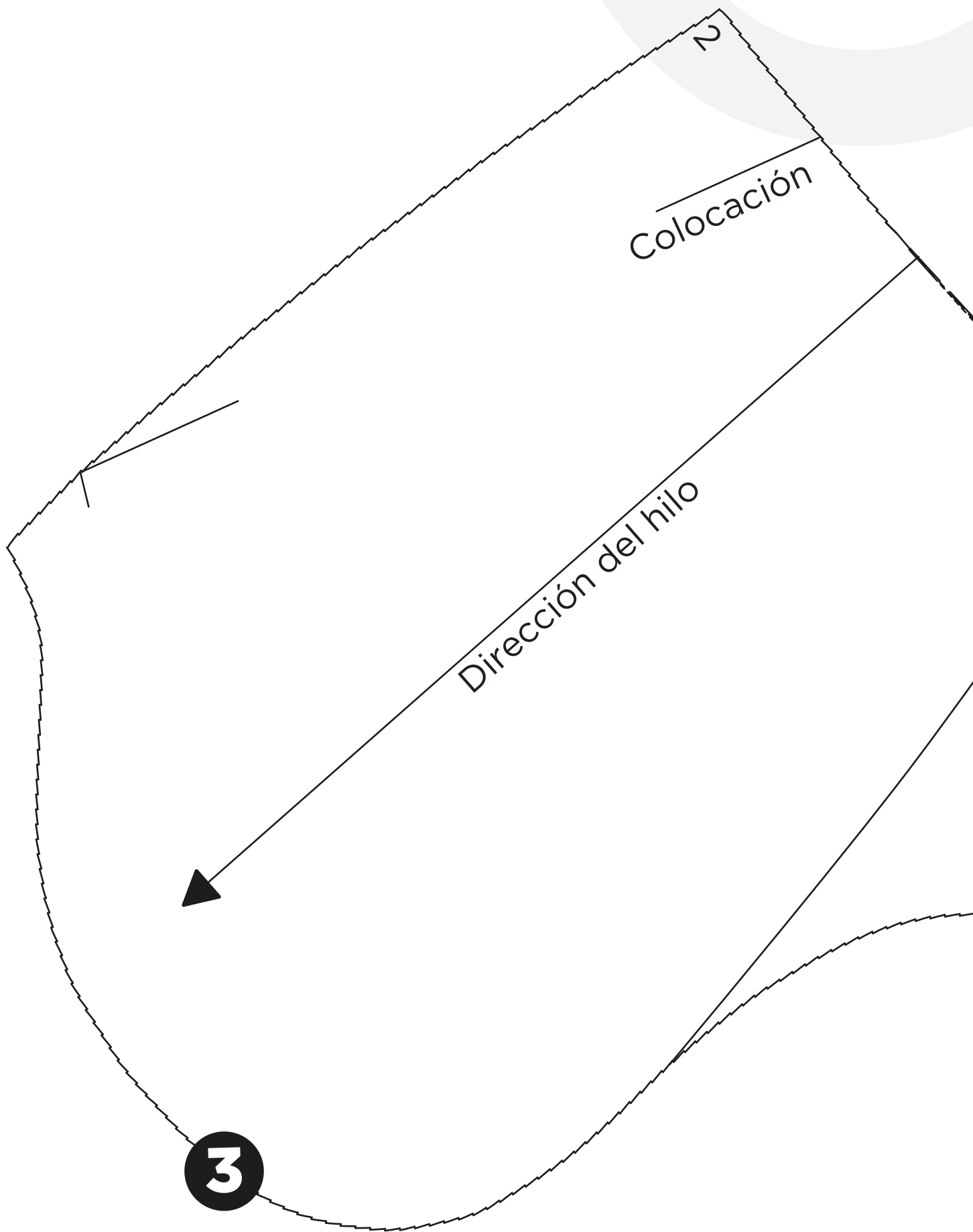




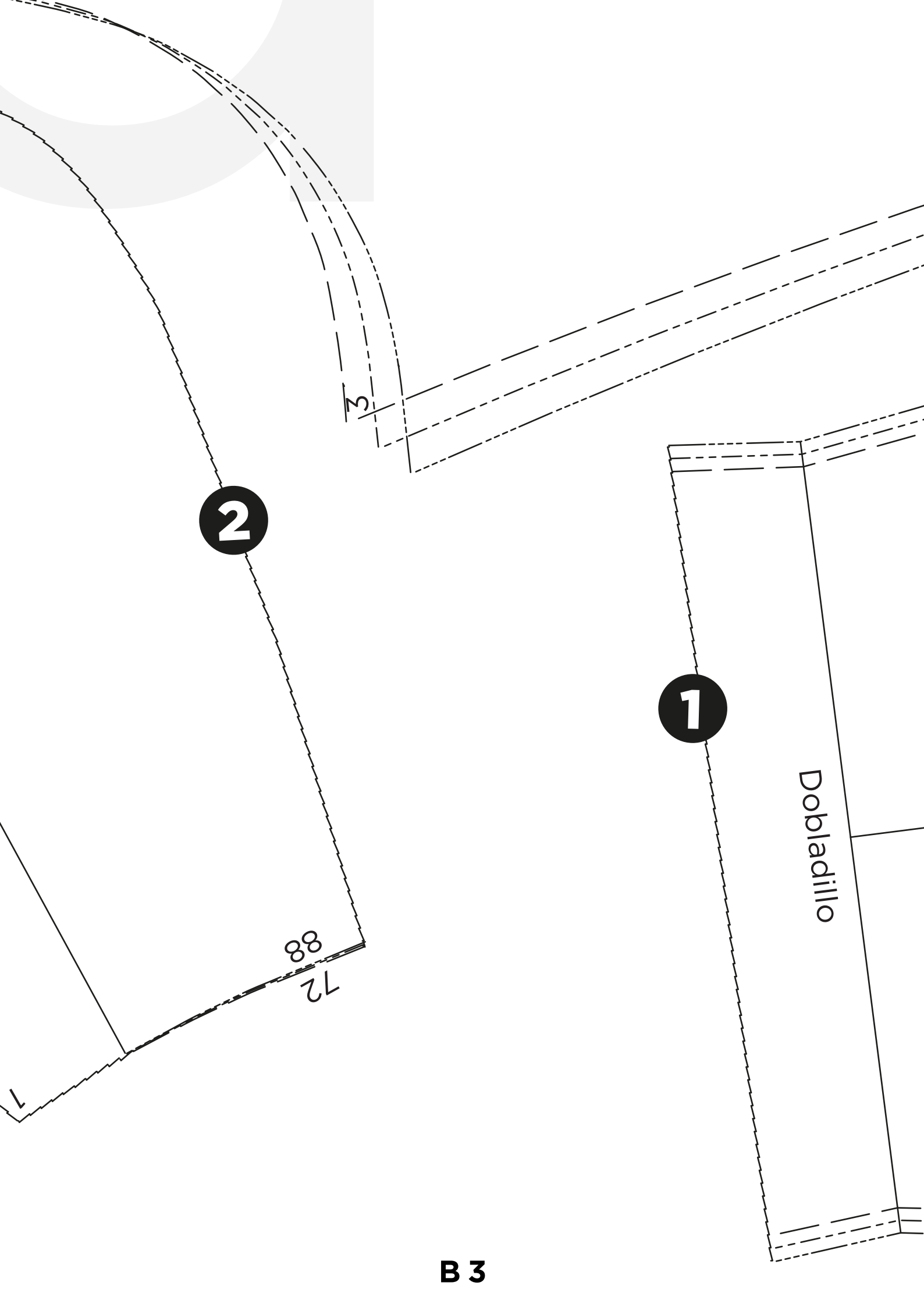
Apertura de bolsillo

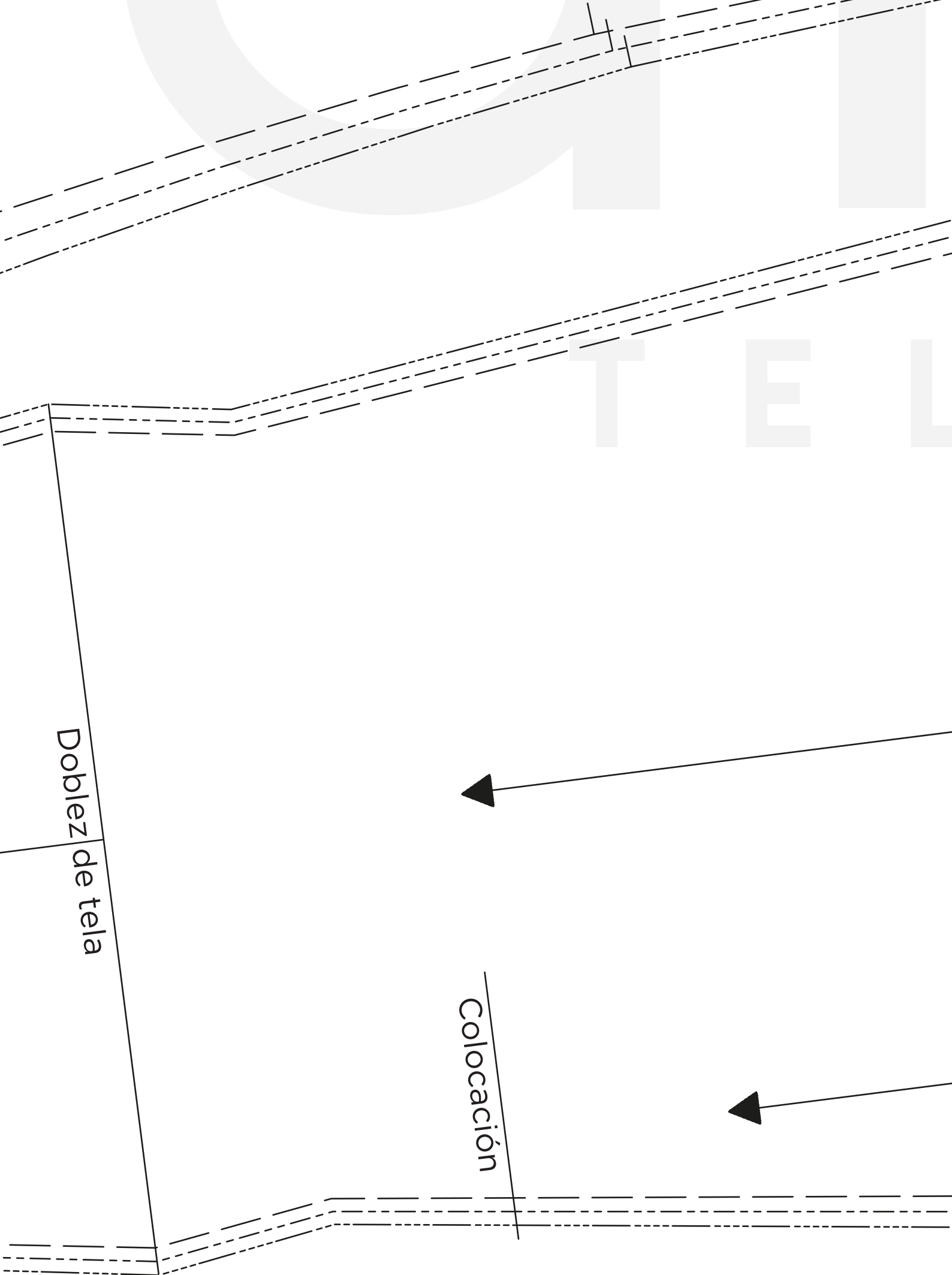
**A8**





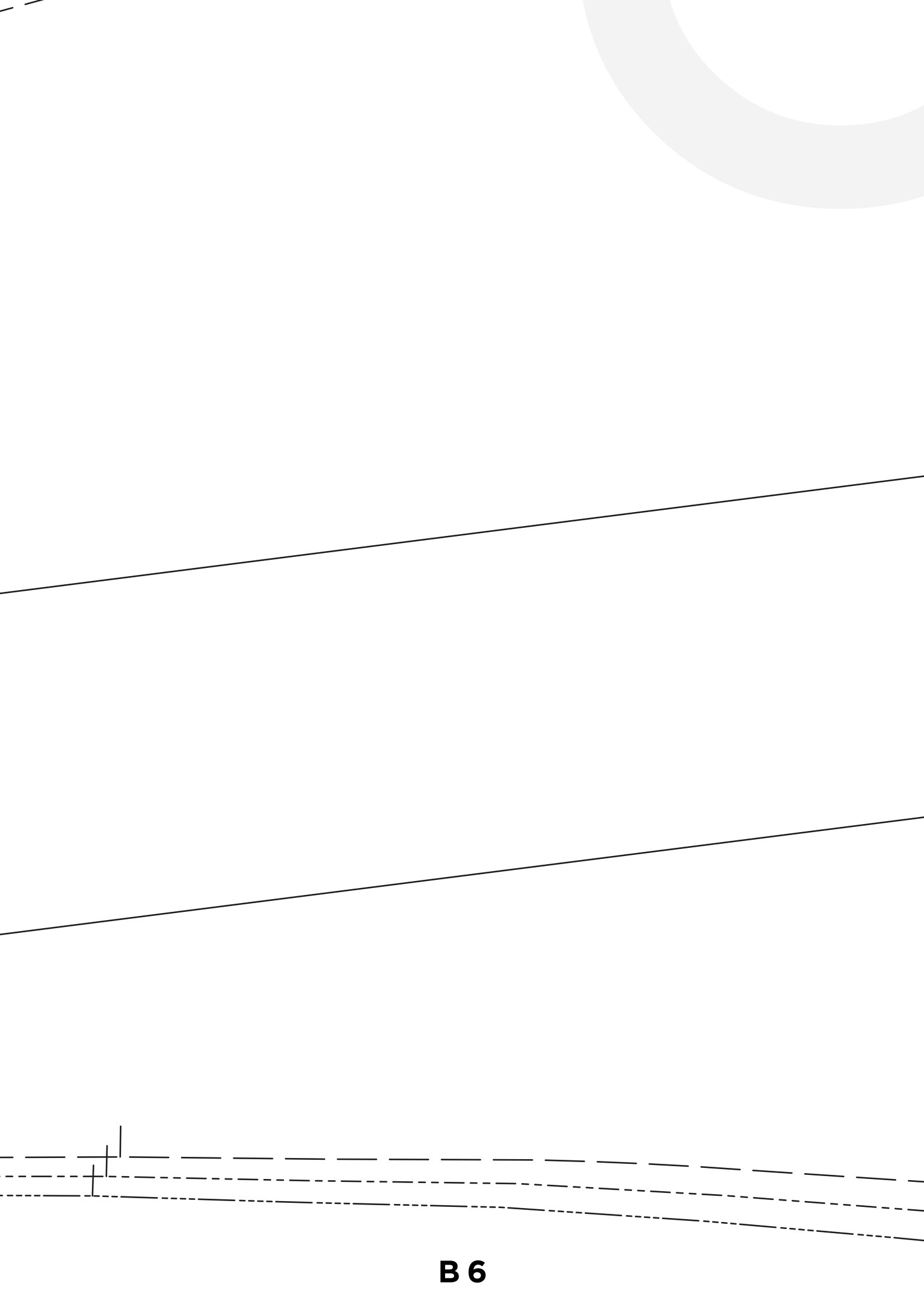






**B 4**





4130

TELLAS

Pliegue p

Dirección del hilo

Costura

3

**B 7**

